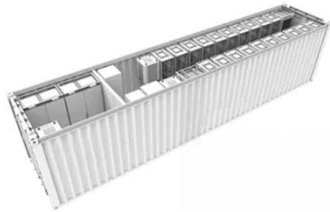


200ah lipo battery



200ah lipo battery

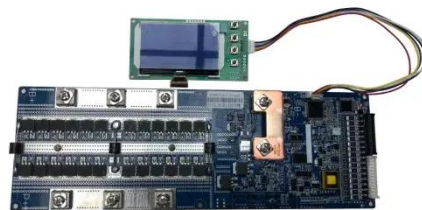


LiTime 12V 200Ah LiFePO4 Deep Cycle Lithium Battery

LiTime 12V 200Ah LiFePO4 lithium battery delivers unmatched energy and performance with EV Grade-A cells and a reliable BMS, making it ideal for indoor and outdoor applications where safety and power are paramount.

12V 200Ah Lithium Battery (LiFePO4)

The Canbat CLI200-12 is a 12V 200Ah deep cycle lithium battery featuring advanced LiFePO4 technology and M8 terminals. The battery is designed for use in all deep cycle applications such as off-grid solar, RV, ...



DETAILS AND PACKAGING



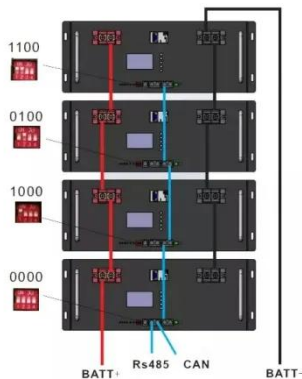
- 1 USER MANUAL PDF
- 2 RJ45 Cable For RS485/CAN
- 3 Battery in Parallel Cables
- 4 RJ45 TO USB Monitor Cable
- 5 M8 Terminal*4

LiTime 12V 200Ah Plus LiFePO4 Lithium Battery

Reliable 12V 200Ah LiFePO4 battery for deep cycle. Enjoy long-lasting power, enhanced safety, and superior performance for RVs, boats, solar systems, and more.

Amazon : 200 Ah Lithium Battery

24V 200Ah Lithium Battery, 5120Wh LiFePO4 Battery, Built-in 200A BMS, 5000 Cycles & 10 Years Lifetime, for Home Energy Storage, RV, Marine and Off Grid Applications



12V 200Ah Lithium Iron Phosphate Battery w/ Bluetooth

Providing reliable power almost 10 times longer than standard lead-acid batteries, the Renogy 12V 200Ah Core LiFePO4 Battery is equipped with EV-grade cells for superior, lasting performance.

12V 200Ah LiFePO4 Deep Cycle Lithium Battery

WattCycle 12V 200Ah LiFePO4 battery provides fast-charging power for RVs and boats, with series/parallel support and strong after-sales service, immediate dispatch.



Power Queen 12V 200Ah PLUS LiFePO4 Lithium Battery

The Power Queen 12V 200Ah PLUS



LiFePO4 battery is equipped with an upgraded 200A BMS, allowing it to charge at up to 200A, double the capacity of the standard 100A version.

12V 200Ah LiFePO4 Deep Cycle Lithium Battery

GoldenMate LiFePO4 batteries use one of the safest and most stable lithium chemistries available. They are UL-certified and include an advanced Battery Management System (BMS) that protects against over-charge, ...



Redodo 12V 200Ah LiFePO4 Lithium Battery , 1280W, Fast Charging

Get the best 12V 200Ah LiFePO4 battery price right now! It has a 2560Wh high energy capacity & 1280W power output and can be fully charged in 5 hours.

ALPHA 2 PRO LiFePO4 Battery , RICH SOLAR

The ALPHA 2 PRO is a 12V 200Ah, UL-

certified LiFePO4 battery with an ergonomic and durable build that's focused on powering your off-grid adventures.



Contact Us

For catalog requests, pricing, or partnerships, please visit:
<https://59empagm.pl>

