

# 540 PV panel size

Support Customized Product



## 540 PV panel size

---

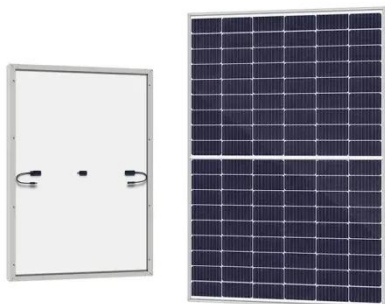


### 540W photovoltaic panel size specifications

Our compact, 89.69 x 44.65 x 1.38-inch solar panel is easy to install and fits seamlessly into any environment. Upgrade your energy system with our powerful 540W monocrystalline solar ...

## Bluebird 540 Watt Half Cut Solar Panels

A 540W Half-Cut Solar Panel refers to a photovoltaic panel that has a power output of 540 watts and employs a "half-cut" cell design. In a half-cut design, the solar cells on the panel are divided into two ...



### Standard Solar Panel Sizes And Wattages (100W-500W Dimensions)

The goal here is to get to the average solar panel size by wattage. You can find typical dimensions of 100W, 150W, 170W, 200W, 200W, 220W, 300W, 350W, 400W, and 500W solar panels summarized ...

## 540W Solar Panels: Specifications, Efficiency, and Cost-Benefit

This depends on your system size, where you live, and any special deals. With 540W panels, you get your money back faster because you spend less and get more power.



## Solar Panel Size & Dimensions Guide 2025 , Complete Specs

Complete guide to solar panel sizes and dimensions. Compare 60-cell vs 72-cell panels, weights, roof space requirements, and installation specs for 2025.

## 540W Bifacial Mono PERC Solar Panel

Our compact, 89.69 x 44.65 x 1.38-inch solar panel is easy to install and fits seamlessly into any environment. Upgrade your energy system with our powerful 540W monocrystalline solar panel.



## MonoPERC Half Cut Panel Series 540/550W

Luminous Power Technologies Pvt. Ltd.  
Solar Panel Series MonoPERC Half Cut ...

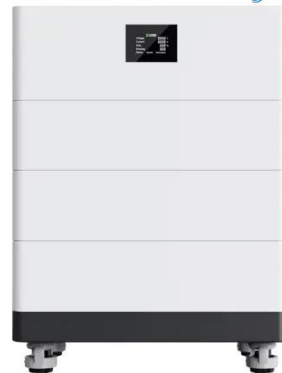


---

## **MonoPERC Half Cut Panel Series 540/550W**

Luminous Power Technologies Pvt. Ltd.  
Solar Panel Series MonoPERC Half Cut  
Panel Series 540/550W. Detailed profile  
including pictures, certification details  
and manufacturer PDF.

## **High Voltage Solar Battery**



## **Monocrystalline Solar Panel 540 WP**

Solar panels with a capacity of 540 watts  
made of silicon solar cells  
Monocrystalline.

---

## **540W photovoltaic panel specifications and models**

What is the size of a 540W solar panel in  
feet? The 540W solar panel typically  
measures approximately: Length: 2285

mm (about 7.5 feet) Width: 1140 mm  
(about 3.7 feet) Thickness:



## 540 Watt Solar Panels

Size of 540 watt solar panels To give you an idea, a standard 540 watt solar panel is approximately 88 x 46 inches and tips the scales at around 72 pounds. Most modules with this output ...

## Contact Us

For catalog requests, pricing, or partnerships, please visit:  
<https://59empagm.pl>

