

600kva photovoltaic panel size



Overview

A 600kW system using 370W panels will require about 2,845.3 square meters of roof to be installed. 600kW solar power systems are mostly suitable for large industrial energy users or solar farms. 5") aren't arbitrary - they represent the optimal balance between power output, installation ease, and roof space utilization. At 40-46 pounds, they can be safely handled by. There are 3 standardized sizes of solar panels, namely: 60-cell solar panels size. That's basically a 66×39 solar panel. But what is the wattage?

That is unfortunately not listed at all. However, the exact dimensions depend heavily on the panel's technology, wattage, and the manufacturer's design.

600kva photovoltaic panel size



Solar Panel Size & Dimensions Guide 2025 , Complete Specs

In this comprehensive guide, you'll learn everything you need to know about solar panel sizing, from standard dimensions to weight considerations, helping you determine the perfect solar ...

Solar Panel Dimensions: Specifications, Power Classes, Roof Area

Analysis of solar panel dimensions and power classes, with reference sizes for 430W/550W/600W modules and corresponding roof area calculations to help select the most ...



600kW Solar System Information - Facts & Figures

Here are some common panel sizes which could make up a 600kW system: How Much Energy Does a 600kW System Produce? Depending on where in Australia (or around the world) you are, a 600kW ...

Solar panel size and weight: everything you need to know

Residential panels are usually made up of 60 PV solar cells, arranged in a 10 by 6 grid pattern. Although exact dimensions vary by manufacturer, home solar panels usually measure about ...

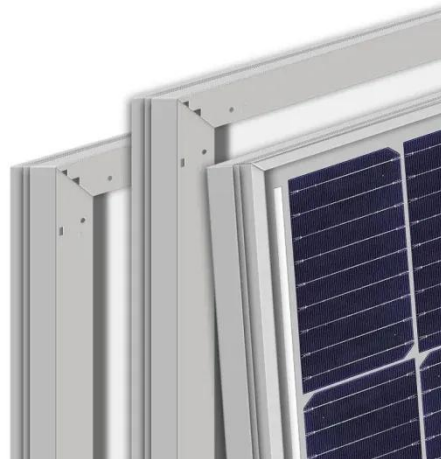


Solar Panel Size: 2026 Detailed Guide

In this article, we will discuss all the important aspects of solar panel size. This guide will help you select the right solar panel size through detailed calculations.

600kW Solar Plant Price list and Major Components

For a 600kW Solar Plant about 1740 qty of poly solar panels of 345wp would be required or 1200 qty of mon-perc solar panels of 500wp. For poly, Vikram / Renewsys Solar are reputable Indian brands ...



Standard Solar Panel Sizes And Wattages (100W-500W Dimensions)

The goal here is to get to the average solar panel size by wattage. You can find typical dimensions of 100W, 150W, 170W, 200W, 200W, 220W, 300W, 350W, 400W, and 500W solar panels summarized ...



The Ultimate Guide to Solar Panel Size, Weight & Wattage (2025)

Standard residential solar panels are typically around 5.8 feet long by 3.5 feet wide and weigh between 40 to 50 pounds. However, the exact dimensions depend heavily on the panel's ...



standard solar photovoltaic panel sizes explained

What is the most common residential solar photovoltaic panel size I will encounter? The standard residential solar photovoltaic panel size you'll see most often is based on a 60-cell ...

Solar Panel Size and Wattage Chart: Standard Sizes & Uses for Each

Using a solar panel size chart can help you choose the best types of solar panels for your home or application. Because the size of a standard solar panel can vary, a chart that outlines the ...



Contact Us

For catalog requests, pricing, or partnerships, please visit:
<https://59empagm.pl>

