

Battery charging current of communication base station

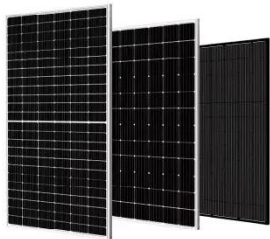


- | | | | |
|---|---------------------------|----|---------------------------|
| 1 | PCS Module | 6 | OPV2 side circuit breaker |
| 2 | Battery room | 7 | High Volt Box |
| 3 | Grid side circuit breaker | 8 | BAT side circuit breaker |
| 4 | Load side circuit breaker | 9 | LCD display screen |
| 5 | OPV1 side circuit breaker | 10 | MPPT |

Overview

A 12V 30Ah LiFePO4 battery has a nominal voltage of 12V and a capacity of 30 ampere - hours (Ah). This means that under ideal conditions. This article clarifies what communication batteries truly mean in the context of telecom base stations, why these applications have unique requirements, and which battery technologies are suitable for reliable operations. While maintaining the reliability, the backup batteries of 5G BSs have some spare capacity over time due to the traffic-sensitive characteristic of 5G BS elect. "Our field tests in Basra showed 40% longer lifespan compared to standard lithium batteries - that's the difference between 3,200 vs 2,200 full charge cycles. " These systems help stabilize Iraq's grid while supporting its 10GW renewable energy target by 2030.

Battery charging current of communication base station

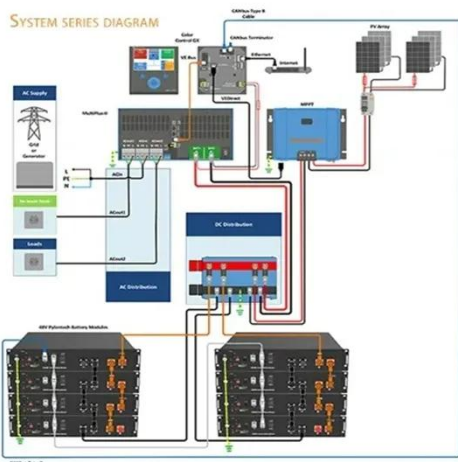


BATTERY CHARGING POWER CALCULATION FOR ...

In solar-powered vehicle energy management, designing an efficient and healthy lithium battery charging strategy can enhance mission execution and prolong flight endurance. However, there are several ...

How Communication Base Station Energy Storage Lithium Battery ...

Charging the Battery: The BMS directs energy into lithium-ion cells, carefully managing charge rates to maximize lifespan and safety. During this phase, the system monitors voltage,



Battery current of communication base station

- For the small-current discharge of alkaline batteries in mobile communication base stations, the Mapo base station in Yuzhong area of Lanzhou suburbs is taken as an example.

48V 50Ah Mobile Communication Base Station Lithium Iron ...

48v 50Ah mobile communication base station lithium iron phosphate battery cell Model: Fe25Ah/25Ah/3.2V battery Specification: Fe25Ah-15S2P/48V/50Ah nominal Voltage: 48V nominal ...



Can a 12V 30Ah LiFePO4 battery be used in a communication base ...

It is important to note that the battery management system (BMS) in the communication base station needs to be compatible with LiFePO4 batteries. The BMS is responsible for monitoring and ...

Communication base station lithium battery charging voltage

Communication base stations typically operate on a 48V power system, which is a standard voltage level for telecommunication equipment. Our 48V LiFePO4 batteries are specifically designed to ...



Telecommunication base station system working

principle and system



The system output load and battery charging current are provided by the solar module. If the output power of the solar module is not enough to provide all loads, it is supplemented by the ...

Communication Batteries: Why Telecom Base Stations Have Unique ...

The phrase "communication batteries" is often applied broadly, sometimes including handheld radios, emergency devices, or general-purpose backup batteries. In practice, when ...

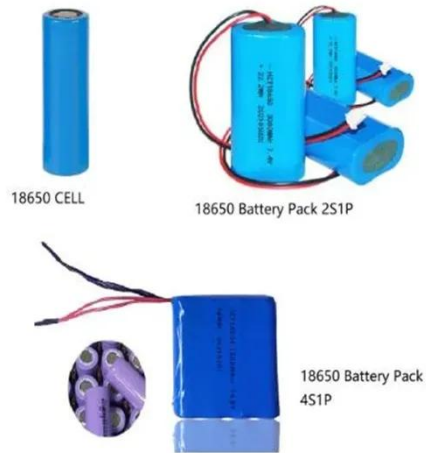


Can a 48V battery be used in a communication base station?

So, to answer the question, yes, a 48V battery can definitely be used in a communication base station. In fact, it's one of the best options available due to its compatibility, reliability, and cost - efficiency in ...

Charging and discharging of energy storage batteries in ...

This paper develops a method to consider the multi-objective cooperative optimization operation of 5G communication base stations and Active Distribution Network (ADN) and constructs a



Contact Us

For catalog requests, pricing, or partnerships, please visit:
<https://59empagm.pl>

