

Can photovoltaic panels be connected to a weak current box



Overview

Wiring solar panels to a breaker box requires connecting the solar inverter's AC output to your electrical panel through either a load-side connection (after the main breaker) or a supply-side connection (before the main breaker). Solar photovoltaic (PV) panels can be wired to increase voltage and/or current. 12 requires rapid shutdown devices, AFCI protection, and proper grounding. Always refer to the NEC code in effect or consult a licensed electrician for safety and accuracy. Check and take care of your combiner box often. This helps your solar system work well and stay safe. Load-side connections must follow the NEC 120% rule: (Main Breaker +). A solar combiner box is a crucial component in solar energy systems, designed to consolidate the outputs of multiple solar panel strings into a single output that connects to an inverter. This device plays a significant role in both residential and commercial solar installations, particularly when.

Can photovoltaic panels be connected to a weak current box



Solar combiner box: definition, core functions and working principle

A combiner box is an electrical device used in solar installations to combine the output current from multiple solar panels into a single circuit, improving system efficiency and offering safety ...

Can photovoltaic panels be connected to a weak current box

Can a solar panel be connected without a junction box? Without a junction box for solar panels, it is likely impossible to facilitate the safe transfer of electricity from the panel to the inverter or battery ...



...



How To Wire Solar Panels to Breaker Box In Parallel vs. Series

Solar panel installation can seem daunting, especially if someone does not know how to wire solar panels to breaker box in parallel vs. series, or how to choose them. Having all of the ...

The latest specifications for weak-current connections of ...

This specification covers the performance, tests and quality standards for the SOLARLOK* Z-Rail Junction box which allows the electrical connection between Photovoltaic (PV) panels.

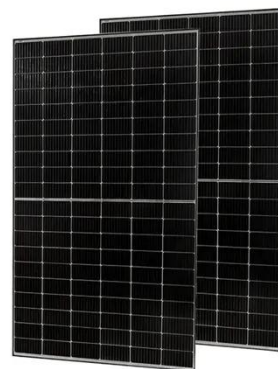


Solar Combiner Boxes and Voltage Changes: What to Know

A solar combiner box joins current from solar panel strings, keeping voltage steady while improving safety and system reliability.

How to connect a PV solar system to the utility grid

The purpose of this article is to give you a basic understanding of the concepts and rules for connecting a solar panel system to the utility grid and the household electrical box or meter.



The Ultimate Guide to Solar Combiner Boxes: From Basics to ...

A solar combiner box is a crucial



component in solar energy systems, designed to consolidate the outputs of multiple solar panel strings into a single output that connects to an inverter.

How to Wire Solar Panels to Breaker Box: Complete Safety Guide 2025

Learn how to safely wire solar panels to your breaker box with our comprehensive guide. Includes NEC compliance, safety procedures, and step-by-step instructions.



How Do You Wire Solar Panels To A Breaker Box? Step-By-Step ...

Learn how to wire solar panels to breaker boxes safely. Guide covers load-side vs supply-side connections, NEC 120% rule, wire sizing, and safety tips.



SPECIFICATIONS FOR WEAK CURRENT CONSTRUCTION OF ...

...

Problem: Loose connections within the combiner box can lead to unstable current flow, affecting system performance. Solution: Check all connectors and terminals for tightness and proper contact. [pdf]



Contact Us

For catalog requests, pricing, or partnerships, please visit:
<https://59empagm.pl>

