

Decomposition principle of communication base station inverter equipment



Overview

This article will guide you to a deeper understanding of a base station's composition and working principles, with a special focus on the impact of heat on base station performance and how efficient thermal materials solve this core problem. What is Base Station?

What is Base Station?

A base station represents an access point for a wireless. Communication Base Station Inverter Dec 14, &#; Power conversion and adaptation: The inverter converts DC power (such as batteries or solar panels) into AC power to adapt to the power needs of various communication equipment. This is critical to The Future of Hybrid Inverters in 5G. The ESB-series outdoor base station system utilizes solar energy and diesel engines to achieve uninterrupted off grid power supply. The following are some specific applications of inverters.

Decomposition principle of communication base station inverter equipment

Modular design,
unlimited combinations in parallel
BUILT-IN DUAL FIRE PROTECTION MODULE



Power equipment for communication base station inverters ...

Today, we have more and more renewable energy sources--photovoltaic (PV) solar and wind--connected to the grid by power electronic inverters. These inverter-based resources (IBRs) do ...

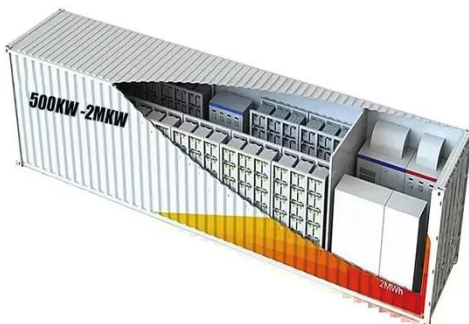
The role of the inverter cabinet in a communication base station

The intent of this section is to explore the role of base stations in communications systems, and to develop a reference model that can be used to describe and compare base station software



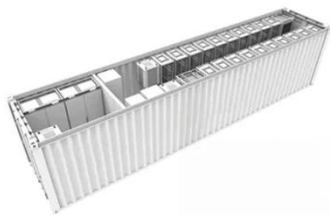
Telecommunication base station system working principle and system

The system output load is powered by the battery to maintain the normal operation of communication equipment. When the battery is discharged for a period of time and meets the ...



Communication Base Station Inverter Deployment Plan

This paper develops a method to consider the multi-objective cooperative optimization operation of 5G communication base stations and Active Distribution Network (ADN) and constructs a description ...



Communication Base Station Inverter Solution Project Overview

Communication Base Station Inverter Dec 14, & ensp;& #;& ensp;Power conversion and adaptation: The inverter converts DC power (such as batteries or solar panels) into AC power to adapt to the power ...

What is a Base Station? -- From Communication Core to Thermal ...

This article will guide you to a deeper understanding of a base station's composition and working principles, with a special focus on the impact of heat on base station performance and how ...



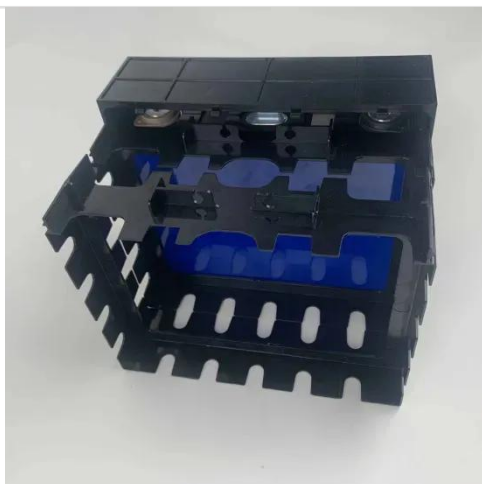
Base Stations



Base stations form a key part of modern wireless communication networks because they offer some crucial advantages, such as wide coverage, continuous communications and an array of ...

Base Stations and Cell Towers: The Pillars of Mobile Connectivity

Base stations use antennas mounted on cell towers to send and receive radio signals to and from mobile devices within their coverage area. This communication enables users to make ...



Communication base station inverter user distribution

Figure 1 illustrates the equipment composition of a typical 5G communication base station, which mainly consists of 2 aspects: a communication unit and a power supply unit.

Contact Us

For catalog requests, pricing, or partnerships, please visit:
<https://59empagm.pl>

