

Flywheel energy storage fastest speed



Overview

Meet the energy storage flywheel – the Usain Bolt of power solutions that's rewriting the rules of energy storage. These mechanical marvels are achieving rotation speeds over 100,000 RPM – that's 30 times faster than a Formula 1 engine at full throttle!. Flywheel energy storage (FES) works by spinning a rotor (flywheel) and maintaining the energy in the system as rotational energy. When energy is extracted from the system, the flywheel's rotational speed is reduced as a consequence of the principle of conservation of energy; adding energy to the. High-speed flywheels- made from composite materials like carbon fiber and fiberglass, typically operate at speeds between 20,000 and 60,000 revolutions per minute (RPM) and can store energy for a few seconds to a few minutes. This paper gives a review of the recent developments in FESS technologies. At the core is the rotor – a cylindrical or disc-shaped mass that spins at high speed, often in excess of tens of thousands of. Imagine a battery that charges faster than your morning espresso machine, lasts decades without degradation, and spins so fast it could orbit Earth 6 times per hour *.

Flywheel energy storage fastest speed



A review of flywheel energy storage systems: state of the art and

There is noticeable progress in FESS, especially in utility, large-scale deployment for the electrical grid, and renewable energy applications. This paper gives a review of the recent ...

Flywheel Energy Storage Systems (FESS)

Advanced FESS operate at a rotational frequency in excess of 100,000 RPM with tip speeds in excess of 1000 m/s. FESS are best used for high power, low energy applications that require many cycles. ...



Flywheel Energy Storage Explained: Fast, Durable And Reliable Grid

How does flywheel energy storage compare with battery energy storage? Flywheels offer rapid charge/discharge, very high cycle life and minimal degradation while batteries generally provide ...

FESS Fkywheel Energy Storage Systems

High-speed flywheels- made from composite materials like carbon fiber and fiberglas, typically operate at speeds between 20,000 and 60,000 revolutions per minute (RPM) and can store energy for a few ...



Technology: Flywheel Energy Storage

Flywheel Energy Storage Systems (FESS) rely on a mechanical working principle: An electric motor is used to spin a rotor of high inertia up to 20,000-50,000 rpm.

A review of flywheel energy storage systems: state of the art and

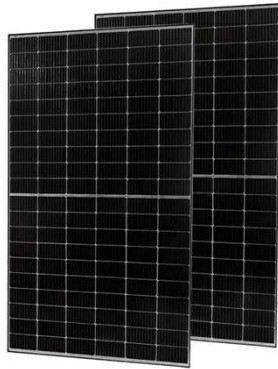
The ex-isting energy storage systems use various technologies, including hydro-electricity, batteries, supercapacitors, thermal storage, energy storage flywheels,[2] and others.

...



The Fastest Energy Storage Flywheel: Powering the Future

at ...



Meet the energy storage flywheel - the Usain Bolt of power solutions that's rewriting the rules of energy storage. These mechanical marvels are achieving rotation speeds over 100,000 RPM ...

Flywheel Energy Storage: Alternative to Battery Storage

Flywheels can quickly absorb excess solar energy during the day and rapidly discharge it as demand increases. Their fast response time ensures energy can be dispatched as needed, ...

**LPR Series 19'
Rack Mounted**



Flywheel energy storage

Such flywheels can come up to speed in a matter of minutes - reaching their energy capacity much more quickly than some other forms of storage. [5] A typical system consists of a flywheel supported ...

High-performance flywheels for energy storage

One motor is specially designed as a high-velocity flywheel for reliable, fast-response energy storage--a function that

will become increasingly important as electric power systems become more reliant on ...



Contact Us

For catalog requests, pricing, or partnerships, please visit:
<https://59empagm.pl>

