

How long and wide is an 800W photovoltaic panel



How long and wide is an 800W photovoltaic panel

- LIQUID/AIR COOLING
 - INTELLIGENT INTEGRATION
- PROTECTION IP54/IP55
 - BATTERY /6000 CYCLES



Standard Solar Panel Sizes And Wattages (100W-500W Dimensions)

Whenever you want to find out what the standard solar panel sizes and wattages are, you encounter a big problem: There is no standardized chart that will tell you, for example, "A typical 300-watt solar ...

Solar Panels 410W-800W Selection Guide

Larger 700W to 800W photovoltaic modules are not always the most economical option, as installation and handling can be more demanding. A balanced combination within the 410W to 800W range ...



Lithium Solar Generator: \$150



standard solar photovoltaic panel sizes explained

The standard residential solar photovoltaic panel size you'll see most often is based on a 60-cell configuration, typically measuring about 67 inches long by 40 inches wide. This size offers the ...

Solar Panel Size Guide (with 4 Charts)

What solar panel size do you need for your home or RV? Use this solar panel size chart as your guide to find out.



800 Watt Solar System (Full Guide, Sizing, Calculator)

The 800-watt solar power system is one of the best solutions to utilize solar power in running some devices during the day and night. However, many questions might come to your mind ...

The Ultimate Guide to Solar Panel Dimensions and Sizes

For example, a typical home solar panel may be around 1.7 meters long and 1 meter wide. The size of a solar panel directly connects to its wattage. Larger panels usually have more ...

LiFePO₄ Battery, safety

Wide temperature: -20~55°C

Modular design, easy to expand

The heating function is optional

Intelligent BMS

Cycle Life: > 6000

Warranty: 10 years



Dimensions and specifications of 800W photovoltaic panels

The typical dimensions of a residential solar panel in the UK is 189cm x 100cm x 3.99cm (length, width and height) Solar

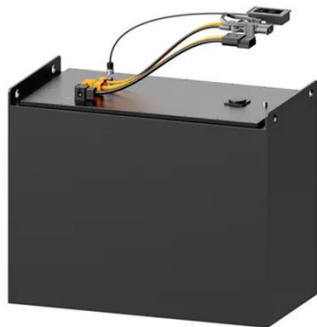
panel weight is a crucial factor to consider when planning a rooftop solar installation.



Solar Panel Size & Dimensions Guide 2025 , Complete Specs

In this comprehensive guide, you'll learn everything you need to know about solar panel sizing, from standard dimensions to weight considerations, helping you determine the perfect solar ...

FLEXIBLE SETTING OF MULTIPLE WORKING MODES



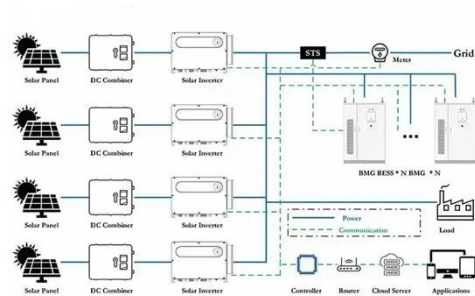
The Ultimate Guide to Solar Panel Size, Weight & Wattage (2025)

Standard residential solar panels are typically around 5.8 feet long by 3.5 feet wide and weigh between 40 to 50 pounds. However, the exact dimensions depend heavily on the panel's ...

800 Watt Solar System (Full Guide, Sizing, Calculator)

The standard residential solar

photovoltaic panel size you'll see most often is based on a 60-cell configuration, typically measuring about 67 inches long by 40 inches wide. This size offers the ...



Understanding 800W Photovoltaic Panel Size: A Comprehensive ...

"An 800W panel typically measures 2.2m x 1.1m - about 25% larger than a standard 400W residential panel, but delivers double the power output." Industry Data: 800W Panel Specifications vs Competitors

Contact Us

For catalog requests, pricing, or partnerships, please visit:
<https://59empagm.pl>

