

How many meters is the photovoltaic panel away from the main line



Overview

In general, it is recommended to place solar panels at least 1. This distance helps ensure that the panels receive an optimal amount of sunlight. Technically, panels can be tens or even hundreds of meters away. Beyond that, cable cost and voltage drop rise fast. Here are the parameters of our test that I've entered into the calculator: Voltage: 36 (My system comprises Thunderbolts at 18 volts, arranged with two in parallel and two in series, resulting in a total of 36 volts. Additionally, local regulations may vary by region or province, so it is essential to check local laws before installation. For ground-mounted solar systems, Legislative Decree (DL 17/2022). When considering the solar panel inverter distance, one of the first things to remember is how far your inverter and battery are from the main electrical panel. The distance between solar panel rows - typically ranging from 3 to 7 meters in commercial installations - can make or break your system's efficiency. [HOME / How Many Meters Should Be Between Photovoltaic Panel](#). The ideal distance of solar panels from a house for optimal energy production can vary based on numerous factors, including geographic location, roof or ground mounting, and shading conditions.

How many meters is the photovoltaic panel away from the main line



How Far Can Solar Panels Be From The House?

Ground-Mounted Solar Panels: The distance between ground-mounted solar panels and a house can vary more widely. Typically, the panels may be situated within 20 to 50 feet of the house. ...

Solar Panel Distance (Battery + Charge Controller + Inverter/House)

Generally, 20-30 feet is the ideal distance between a solar panel, such as an array, and the solar battery backup supply. The longer the wire from the solar panel to the battery, the more ...



How Many Meters Should Be Between Photovoltaic Panel Rows? The ...

That's exactly what happens when photovoltaic panel spacing isn't calculated properly. The distance between solar panel rows - typically ranging from 3 to 7 meters in commercial installations - can ...

How Far Should Solar Panels Be? 5 Efficiency Secrets

This article dives into the technical details of solar panel distance and roof spacing, revealing hidden factors like cable resistance, voltage drop, and heat management. Whether you're a DIY enthusiast ...



1075KWHH ESS

The best distance between solar panels and house

In general, it is recommended to place solar panels at least 1.5 times the height of any nearby structures, such as the house, away from the roofline to prevent shading and maximize ...

Distance Between Solar Panels and House: What You Need to Know

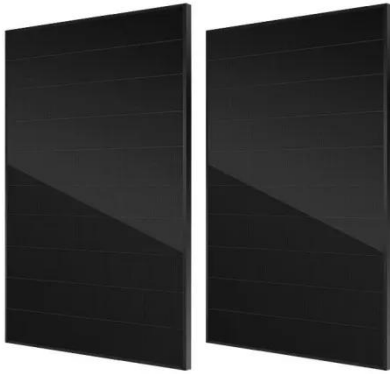
Technically, panels can be tens or even hundreds of meters away. Economically, I recommend 30-50 m or less. Beyond that, cable cost and voltage drop rise fast. Place the inverter near the array, then run ...



Distance Limitations for Solar Panels: A Comprehensive

Analysis

Regulations and building codes vary, and they may also indicate how far away the solar panels can be from your house. Depending on the codes, wiring, grounding or even safety requirements may ...



Long Solar Cable Run? Here's How to Minimize Line Loss

When running long stretches of wire, you can have considerable losses between your solar panels and where the power is landing (in our case, a portable power station 185 feet away).



Solar Panel Inverter Distance: How Far Can They Be from Your ...

In conclusion, managing your solar panel inverter distance by storing the inverter and battery in a guest house and running the lines to the main panel over 100 feet is practical.

How to Calculate the Minimum Distance Between PV Panels?

This law mandates that solar panels

must be installed at least two meters away from property boundaries. Additionally, local regulations may vary by region or province, so it is essential ...



Contact Us

For catalog requests, pricing, or partnerships, please visit:
<https://59empagm.pl>

