

# How many watts does a 540 photovoltaic panel produce



## Overview

---

A 540 watt solar panel is designed to convert sunlight into electricity, with a maximum output of 540 watts under ideal conditions. This rating indicates the panel's efficiency and capacity to generate power. However, the actual power produced can vary based on several factors. How much solar energy do you get in your area?

That is determined by average peak solar hours. South. The fundamental formula for calculating solar panel wattage is:  $\text{Wattage} = \text{Voltage} \times \text{Current}$ . When applied to solar panels, this can be expressed as:  $\text{Solar Panel Wattage} = V_{mp} \times I_{mp}$ . Where:  $V_{mp}$  represents the voltage at maximum power point, indicating the optimal voltage level at which the panel. The Solar Panel Output Calculator is a highly useful tool so you can understand the total output, production, or power generation from your solar panels per day, month, or year. But wattage alone doesn't tell the whole story. In fact, efficiency matters more than wattage when comparing solar panels—a higher wattage can simply.

## How many watts does a 540 photovoltaic panel produce

---



### How Much Energy Does A Solar Panel Produce? , EnergySage

About 97% of home solar panels installed in 2025 produce between 400 and 460 watts, based on thousands of quotes from the EnergySage Marketplace. But wattage alone doesn't tell the whole story.

---

## Pv Panel Output Calculator

Quickly estimate your solar panel energy output with our PV Panel Output Calculator. Get daily, monthly, and yearly results in seconds.



### How Much Energy Does A Solar Panel Produce?

If you're thinking about going solar, one of your biggest questions is likely: how much electricity can a solar panel actually produce? This in-depth guide breaks down the numbers, the factors that influence ...

## Solar Panel Output Calculator , Get Maximum Power Output

Total Solar Panel Size (W): Input the total wattage of your solar panel system. For instance, if you have 4 solar panels rated at 200W each, you would enter 800 (4\*200). Step 2: Select Panel Type. Panel

...



## Exploring How Much Power a 540 Watt Solar Panel Produces

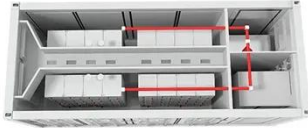
A 540 watt solar panel is designed to convert sunlight into electricity, with a maximum output of 540 watts under ideal conditions. This rating indicates the panel's efficiency and capacity to generate power.

## Solar Panel Output Calculator by Wattage , SolarMathLab

Estimate daily, monthly, and yearly solar energy output (kWh) based on panel wattage, quantity, sunlight hours, and efficiency factors. Losses come from inverter efficiency, wiring, temperature, and dirt. Typical total ...



## Solar Panel kWh Calculator: kWh Production Per Day, Month, Year

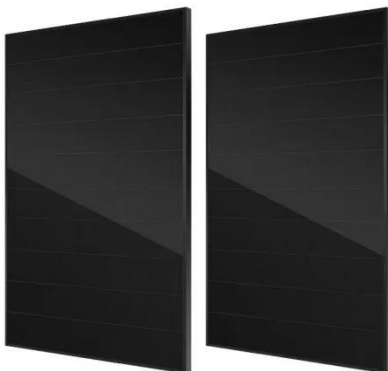


Based on this solar panel output equation, we will explain how you can calculate how many kWh per day your solar panel will generate. We will also calculate how many kWh per year do solar panels generate and how ...

---

## Solar Panel Wattage Calculator

A 500-watt solar panel can power a variety of household appliances and devices. Assuming an average of 5 hours of peak sunlight, it could generate approximately 2.5 kWh of energy daily.



---

## Solar Panel Output Calculator

Use this solar panel output calculator to find out the total output, production, or power generation from your solar panels per day, month, or in year. Also, I'm gonna share some tips to get the maximum ...

---

## PVWatts Calculator

Estimates the energy production and cost of energy of grid-connected photovoltaic (PV) energy systems throughout the world. It allows

homeowners, small building owners,  
installers and manufacturers to easily ...



---

## Contact Us

---

For catalog requests, pricing, or partnerships, please visit:  
<https://59empagm.pl>

