

How many watts does a high-end solar light for home use have



Overview

How many watts does a high wattage solar panel light have?

High wattage solar panel lights typically range between 30 to 300 watts, with some premium options reaching up to 600 watts. The exact wattage correlates with brightness levels, effectively determining the panel's capability to illuminate. Space Efficiency Drives Value: High-wattage panels (550W+) are most cost-effective for homes with limited roof space, providing up to 30 square feet of space savings compared to standard 400W panels for equivalent power output. This guide breaks down wattage requirements, efficiency trends, and real-world examples to help you choose the best solar lighting solution for your needs. Higher wattage typically means brighter lights, but it also requires more energy, which can affect battery life and overall efficiency. Among the top choices in the market, Hykoont's solar wall lights stand out for their high-efficiency LED technology and smart.

How many watts does a high-end solar light for home use have

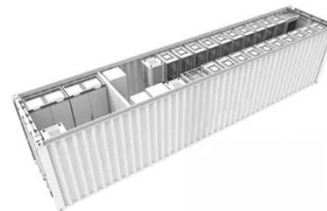


How Many Watts Does Solar Home Lighting Require? A Practical Guide

Determining solar home lighting wattage requires balancing energy needs with system efficiency. Most households find success with 100-300W systems, though exact requirements depend on individual ...

Lumens in Solar Lighting: How Brightness Really Works (Watt vs ...

Watts only measure power usage, while lumens show how much visible light the fixture emits. More lumens mean a brighter light. For example, pathway lights typically need 50-200 lumens, ...



Good Solar Light Wattage: Best Power for Outdoor ...

Wondering what wattage makes a good solar light? Discover the ideal power range for bright, efficient lighting in any outdoor space.



How Many Watts Does a High-End Solar Light for Home Use Have A ...

Summary: High-end solar lights for home use typically range between 10W and 100W, depending on their application. This guide breaks down wattage requirements, efficiency trends, and real-world ...



Solar Lighting Design Guide - Wattage / Lumen Requirements

Higher lighting requirements of highways and parking lots start around 25 Watts / 2600 Lumens and go up to 70 Watts / 6500 Lumens. Note: The lower the wattage, the less the LED fixture has to work to ...

What Is a Good Wattage for Solar Wall Lights?

If you want bright, motion-activated, and long-lasting solar lighting, Hykoont's solar wall lights offer optimized wattage with high-efficiency LEDs, making them a smart investment for any ...



Highest Watt Residential Solar

Panels 2025 [Complete Guide]



How many watts is the highest residential solar panel? The highest wattage residential solar panels currently available reach 670 watts for commercial-sized residential applications, with ...

How many watts does a high wattage solar panel light have?

High wattage solar panel lights typically range between 30 to 300 watts, with some premium options reaching up to 600 watts. The exact wattage correlates with brightness levels, ...



Understanding Solar Light Wattage: What You Need to Know

Learn how solar light wattage impacts performance, efficiency, and brightness. Find tips to choose the right wattage for your outdoor lighting needs.

Solar Panel Wattage Explained: How Many Watts Do You Need?

Most residential solar panels fall into the

250W to 450W range, depending on the technology and manufacturer. But though commercial systems may use panels exceeding 500W. ...



Contact Us

For catalog requests, pricing, or partnerships, please visit:
<https://59empagm.pl>

