

How much does wind power generate



Overview

Every year, wind turbines produce about 434 billion kilowatts (kWh) of electricity a year. Just 26 kWh of energy can power an entire home for a day. Check the wind maps provided by National Renewable Energy Laboratory to learn whether wind speed and availability in your area makes wind energy a good choice for your home. Government requirements and financial incentives for renewable energy in the United States and in other countries have contributed to growth in wind power. You might be curious, how much electricity is one wind turbine capable of generating?

And what can the electricity from turbine. The efficiency of wind turbines depends on several factors, including their location, size, blade radius and capacity factor. Wind power capacity totals over 155 GW, making it the fourth-largest source of electricity generation capacity in the country. This is enough wind power to serve the equivalent of nearly 50 million. Did you know that a single large wind turbine can generate enough electricity to power approximately 500 homes?

As the world increasingly turns to renewable energy sources, understanding how much electricity wind turbines produce becomes crucial for homeowners, businesses, and policymakers alike.

How much does wind power generate



Wind Power Facts and Information , ACP , ACP

A typical modern turbine will start to generate electricity when wind speeds reach six to nine miles per hour (mph), known as the cut-in speed. Turbines will shut down if the wind is blowing too hard

...

How Much Energy Does a Wind Turbine Produce?

Every year, wind turbines produce about 434 billion kilowatts (kWh) of electricity a year. Just 26 kWh of energy can power an entire home for a day. Wind is the third largest source of ...



How Much Energy does a Wind Turbine Generate?

Most onshore wind turbines have a capacity of 2-3 megawatts (MW), which can produce 6 million kilowatt hours (kWh) of electricity every year. Enough to power around 1,500 average ...

How Much Electricity Does a Wind Turbine Produce?

On average, a single wind turbine produces over 6 million kilowatt-hours of electricity annually, which is enough to power around 1,500 households for a year. This turbine annual ...

Sample Order
UL/KC/CB/UN38.3/UL



How Much Electricity Does a Wind Turbine Produce? Real Output Data

Q: How much electricity does a typical wind turbine produce in a year? A: A typical onshore wind turbine with a capacity of 2.5 MW can produce approximately 6 million kWh of ...

How much does a wind turbine produce? , Business Norway

Discover how much energy a wind turbine produces. Learn about the efficiency, power output and capacity factors for both onshore and offshore wind turbines.



How Much Power Does A Wind Turbine Generate?

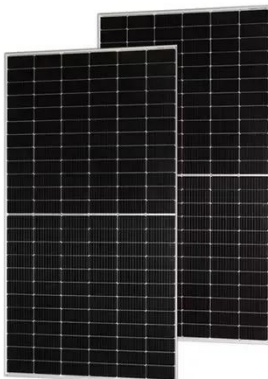
Just because a wind turbine has a



capacity rating of 1.5 megawatts, that doesn't mean it will produce that much power in practice. Wind turbines commonly produce considerably less than ...

How Much Energy Does a Wind Turbine Produce?

Wind power accounts for about 8% of global electricity generation, and countries around the globe continue to develop and scale up their wind power generation capacity.



Wind Energy Factsheet

Wind could provide 20% of U.S. electricity by 2030 and 35% by 2050. 11 Five of the eight Great Lakes states have offshore wind energy potentials that exceed their annual electricity demand (MI, WI, NY, ...

Electricity generation from wind

In 2022, wind turbines were the source of about 10.3% of total U.S. utility-scale electricity generation. Utility scale

includes facilities with at least one megawatt (1,000 kilowatts) of electricity

...



Contact Us

For catalog requests, pricing, or partnerships, please visit:
<https://59empagm.pl>

