

# How to use the photovoltaic smart battery cabinet



## Overview

---

This video provides a complete overview of the accessory components and a detailed step-by-step installation process. It covers every detail, including the installation of removable casters, heavy-duty bus bars, and other complex steps, ensuring clarity and ease of understanding. It promotes renewable energy. What type of batteries are used in energy storage cabinets?

Lithium batteries have become the most commonly used battery type in modern energy storage cabinets due to their high energy density, long life, low self-discharge rate and fast charge and discharge speed. DC-couple to Generac PWRzone solar or PWRgenerator. The PWRcell Battery Cabinet allows system. This document describes the SmartLi 2.0 intelligent lithium battery cabinet (lithium battery cabinet for short) in terms of its overview, transportation, storage, installation, cable connection, power-on commissioning, and maintenance, helping readers understand. How do I connect a lithium battery. These modular storage systems, capable of seamless integration into both urban and rural settings, provide a reliable and stable power supply, addressing a myriad of energy challenges across diverse environments. Energy storage units are essentially advanced battery systems housed within standard.

## How to use the photovoltaic smart battery cabinet

---



### Working Principle and Advantages of Solar Battery Storage Cabinets

As the name suggests, a solar battery storage cabinet is a device used to store the energy generated by solar panels. Typically, the solar battery storage cabinet consists of a battery pack and an ...

---

### The Ultimate Guide to Solar Battery Storage Cabinets

Discover the benefits of solar battery storage cabinets. Learn how solar energy storage can optimize your solar energy system's performance, safety, and efficiency.



### BATTERY CABINET

An existing PWRcell Battery Cabinet can be upgraded with additional modules. Use the graphic below and the chart on the back of this sheet to understand what components you need for your chosen PWRcell ...

## How to Use Huawei Energy Storage Battery Cabinet: A Step-by-Step ...

From solar farms to hospital backup systems, Huawei's energy storage cabinets are like the Swiss Army knives of power management. Whether you're looking to cut energy costs or boost renewable integration, proper ...

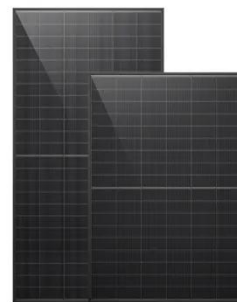


## HOW TO USE THE INTELLIGENT PHOTOVOLTAIC BATTERY CABINET

What is a typical battery cabinet? A typical cabinet integrates batteries, racking and chargers into an indoor (NEMA 1 or IP21) or outdoor (NEMA 3R or IP54) rated enclosure. There are many different options and ...

## Installation of 6-slot Enclosed Battery Cabinet with Busbar

Welcome to SUNGOLDPOWER's installation video for our new battery cabinets! This video provides a complete overview of the accessory components and a detailed step-by-step installation process.



## How to use the solar smart battery exchange cabinet



Understanding how the solar smart battery exchange cabinet functions is crucial for users seeking to harness its capabilities fully. This system operates through the coordination of solar panels, ...

---

## Step-by-Step Solar Battery Cabinet Installation Guide

Follow this detailed guide for a smooth installation of your solar battery cabinet and maximize renewable energy use



---

## Outdoor Solar Battery Cabinet Installation Guide: Ensuring

This guide provides step-by-step instructions on how to install your R-BOX-OC outdoor solar battery cabinet, including site selection, assembly, wiring, and system testing.

---

## Smart battery cabinet installation video

This document describes the SmartLi 3.0 (short-term backup power) intelligent lithium battery cabinet (lithium battery

cabinet for short) in terms of its overview, transportation, storage, installation, cable connection, ...



---

## Contact Us

---

For catalog requests, pricing, or partnerships, please visit:  
<https://59empagm.pl>

