

India mumbai electric wind turbine power station



India mumbai electric wind turbine power station



Mumbai Airport Launches First-of-its-Kind Vertical Axis Wind Turbine

This plant requires bare minimum maintenance of installation, unlike any other machines for electrical supply, where load & batteries are attached to the system. CSMIA aims to replicate the project to ...

Western Railway installs mini windmills to generate wind energy along

In an attempt to reduce the carbon footprint in the city, the western railway has installed five mini windmills along the railway tracks of Khar Road and Naigon railway stations. This mini ...



Tata Power generates 200 million units of electricity from wind, solar

MUMBAI: Tata Power on Tuesday announced that it is now generating nearly 200 million units of electricity annually from the Agaswadi wind farm and Palaswade solar park at Satara, with ...



List of power stations in India

Thermal power is the largest source of power in India. There are ...

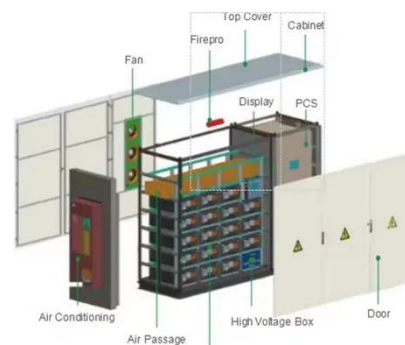


Leading wind energy company in India

Each project is built on careful site assessment, robust engineering and dependable long-term operations, helping strengthen wind energy in India while supporting national renewable energy goals.

List of power stations in India

Thermal power is the largest source of power in India. There are different types of thermal power plants based on the fuel used to generate the steam, such as coal, gas, diesel, and natural gas.



Western Railway Plans to Generate Electricity with Turbines Along



Mumbai: The Western Railway (WR), which has already been harnessing solar energy, is now working on a plan to generate energy with turbines along the tracks and has installed mini ...

Wind power in India

In Muppandal windfarm, the total capacity is 1500 MW with nearly 3000 wind turbines, the largest wind power plant in India. The total wind installed capacity in Tamil Nadu is 11,042.44 MW, around 1 GW ...



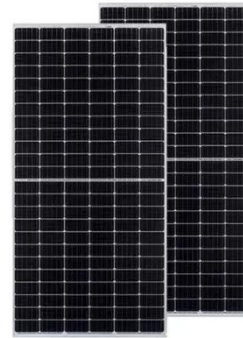
In a first, WR installs mini windmills to generate electricity

Mumbai: In an effort to reduce their carbon footprint in the city, ...

Power plant profile: Maharashtra Wind Farm-JSW Energy, India

It is planned in Maharashtra, India.
According to GlobalData, who tracks and

profiles over 170,000 power plants worldwide, the project is currently at the permitting stage.



How Mumbai's Railway Stations Are Using Wind From Trains to ...

Mumbai's Western Railway is leading India's railways into a sustainable future by harnessing the wind energy from moving trains with wind turbines.

In a first, WR installs mini windmills to generate electricity

Mumbai: In an effort to reduce their carbon footprint in the city, the Western Railway (WR), for the first time, is trying to generate electricity through wind energy and has installed mini



Contact Us

For catalog requests, pricing, or partnerships, please visit:

<https://59empagm.pl>

