

Is the base station wind power indoor or outdoor



2MW / 5MWh
Customizable



Overview

Wind power has no effect on base load. However, since base load providers can not be ramped down, if wind turbines produce power when there is no or little peak load, the extra electricity has to be dumped (e. Andrew's re-designed base station antennas are crafted to be exceptionally aerodynamic, minimizing the overall. As tower space becomes increasingly scarce and some infrastructure pushes its limits, the demand for antennas that can better withstand wind loads is more crucial than ever. Base load is the level that it typically does not go below, that is, the basic amount of electricity that is always required. It is usually. Huijue Group's energy storage solutions (30 kWh to 30 MWh) cover cost management, backup power, and microgrids. To cope with the problem of no or difficult grid access for base stations, and in line with the policy trend of energy saving and emission reduction, Huijue Group has launched an. Wind power plants, often known as wind farms, have become symbols of the renewable energy revolution. But in any case, power supplied using wind cannot exceed 50% of the total power supply.

Is the base station wind power indoor or outdoor

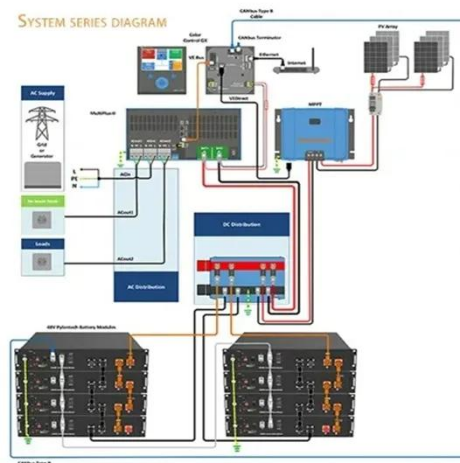


National Wind Watch , The Grid and Industrial Wind Power

Base load is typically provided by large coal-fired and nuclear power stations. They may take days to fire up, and their output does not vary.

Renewable energy sources for power supply of base station sites

Since base stations are major consumers of cellular networks energy with significant contribution to operational expenditures, powering base stations sites using the energy of wind, sun, fuel cells or a ...



RE-SHAPING WIND LOAD PERFORMANCE FOR BASE ...



Andrew's re-designed base station antennas are crafted to be exceptionally aerodynamic, minimizing the overall wind load imposed on a cellular tower or similar structures. Wind load is the force generated ...

National Wind Watch , The Grid and Industrial Wind Power

The solution adopts new energy (wind and diesel energy storage) technology to provide a reliable guarantee for the stable operation of communication base stations.



Energy Storage Equipment, Energy storage solutions, Lithium battery

The solution adopts new energy (wind and diesel energy storage) technology to provide a reliable guarantee for the stable operation of communication base stations.

Outdoor integrated base station wind power generation system

This large-capacity, modular outdoor base station seamlessly integrates photovoltaic, wind power, and energy storage to provide a stable DC48V power supply and optical distribution.



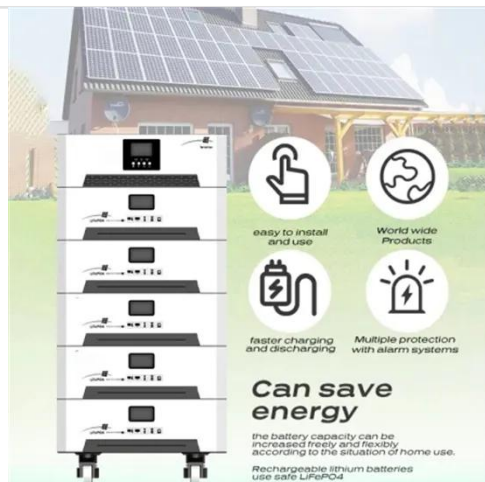
Impact of wind power on indoor and outdoor base stations



Impact of wind power on indoor and outdoor base stations Measurements show the existence of a direct relationship between base station traffic load and power consumption.

Is the base station wind power indoor or outdoor

What is a green base station? The Green Base Station which is introduced is equipped with the regenerative energy sources wind power and photo-voltaic energy to reduce the power consumption ...



Wind power construction of communication base stations

We investigate the use of wind turbine-mounted base stations (WTBSs) as a cost-effective solution for regions with high wind energy potential, since it could replace or even outperform

Airport materials outdoor base station wind power

Base station antennas not only add load to the towers due to their mass, but also

in the form of additional dynamic loading caused by the wind. Depending on the aerodynamic efficiency of the ...



How Do Wind Power Stations Work? A Detailed Look Inside

A wind power station, often known as a wind farm, captures wind's kinetic energy and turns it into electricity. Here's an explanation of how do wind power stations work internally:

Contact Us

For catalog requests, pricing, or partnerships, please visit:
<https://59empagm.pl>

