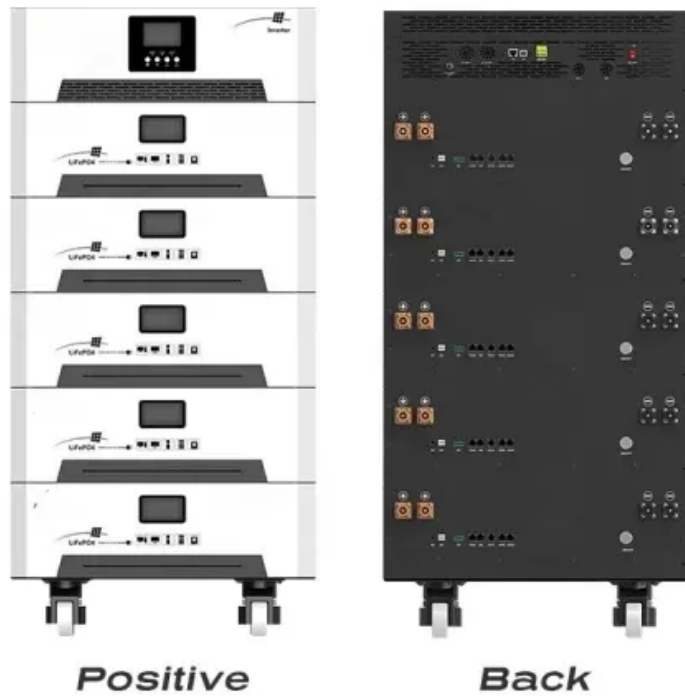


# Marshall Islands communication base station wind and solar complementary settlement policy



## Overview

---

In 2016, the government approved the updated National Energy Policy and Energy Action Plan. 5 The updated plan has four priority outcomes: (i) improved enabling frameworks for reducing dependence on imported fossil fuels; (ii) ensuring all Marshallese have equitable access to modern. The Republic of the Marshall Islands is calling for ambitious action by all countries to reduce greenhouse gas emissions. We are leading the way by committing to net zero emissions by 2050, with significant milestones along the way. sector grants and trust-fund resources to strengthen the enabling. stomers who consume less than 500 kWh per month. Certain policy measures have made cost recovery for RMI's util ties more difficult than typical rate structures. The Strategy provides a number of. Kwajalein Atoll Joint Utility Resources (KAJUR), a subsidiary of MEC, is responsible for on-grid electricity generation, transmission, and distribution, and water and sanitation services in Ebeye. MEC supplies electricity in Majuro.

## Marshall Islands communication base station wind and solar comple

---

### RMI Energy Future



It presents our strategies for policy, financing, and human resources to ensure we are successful. It brings together the steps we are already taking and makes clear the next steps we need to take ...

### Energy Transition Project: Sector Assessment (Summary)

The main development partners in the Marshall Islands energy sector include ADB, the European Union (EU) and the World Bank. Bilateral development partners include Japan, New Zealand, and the ...



### MARSHALL ISLANDS: 2050 Climate Strategy: Lighting the Way

Assumption: one to two 1.5-2.5 MW turbines can be used in Majuro, as wind's generation profile is complementary to solar. Land is scarce in RMI, and non-government rooftops are not structurally ...

## World Bank Document

The National Building Code of the Republic of the Marshall Islands 2021 Edition is presently in a draft form and is being formatted to suit RMI's needs and international requirements.



## RMI NIIP 2023 V12c Design

It serves as the basis for the RMI's 10-year infrastructure pipeline, taking into account the needs indicated in sectors plans, public asset performance data, and the interests and priorities of local ...

## 2025 Marshall Islands Investment Climate Statement

The PIF has a model regulatory and policy framework focused on competition, access and pricing, fair trading, and consumer protections. The Marshall Islands has sought to implement PIF-agreed ...

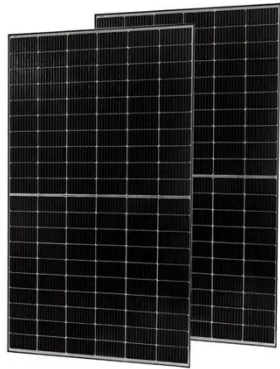


## Energy Snapshot Republic of the Marshall Islands

This energy snapshot was prepared to support the Energy Transition Initiative,

which leverages the experiences of islands, states, and cities that have established a long-term vision for energy

...



---

## Republic of the Marshall Islands Energy Sector Review and ...

The highest funding was towards Energy conversion; through the installations of solar PV systems in the outer island households, at Majuro hospital and other public amenities such as basketball courts, ...



---

## MARSHALL ISLANDS: Navigating our Energy Future: Marshall ...

This long-term Electricity Roadmap for the Marshall Islands presents costed, technically sound, renewable energy pathways for our electricity sector, to help achieve our ambitious climate change ...

---

## Marshall Islands

## communication base station inverter grid ...

The Implementation of The Marshall Islands' renewable energy project carried out by SINOSOAR, under the supervision of Marshalls Energy Company (MEC) and the World Bank.



---

## Contact Us

For catalog requests, pricing, or partnerships, please visit:  
<https://59empagm.pl>

