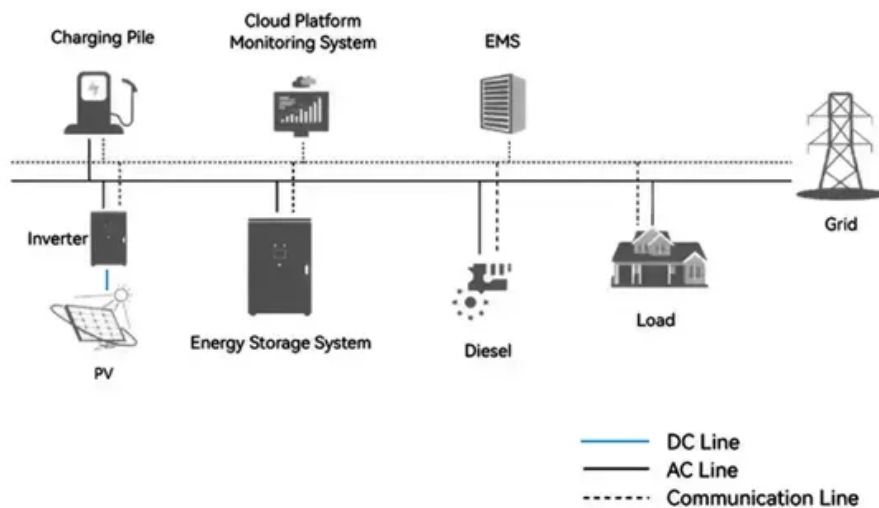


Material of carbon brushes for generators in large power stations

System Topology



Overview

Generator carbon brushes are conductive materials that transfer electricity between the stationary and rotating parts of a generator. Understanding. Schunk offers high-quality carbon brushes for generators, designed for maximum efficiency, extended service life, and outstanding operational reliability in energy-intensive environments. With over 100 years of experience, we develop customized solutions for generators used in wind and hydropower. In addition, due to the continuing improvement of techniques and change of applicable standards, Mersen is entitled to modify at any time the characteristics and specifications of its products as described in present catalogue. WHAT IS A CARBON BRUSH?

spark-free commutation. It is essentially a small, rectangular sliding block commonly found in DC motors, where it ensures commutation is spark-free.

Material of carbon brushes for generators in large power stations

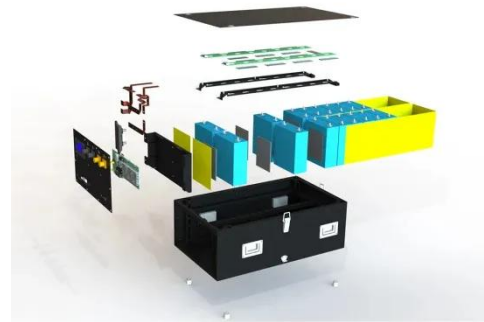


15 Common Carbon Brush Types for Electrical Applications

Electric motors and generators that handle substantial electrical loads implement high-power carbon brushes. These brushes are made suitable offering efficient current transfer with ...

Generator Carbon Brush: Ensuring Power Continuity- Ningbo Nide

Generator carbon brushes are conductive materials that transfer electricity between the stationary and rotating parts of a generator. They are typically made from carbon or graphite, ...

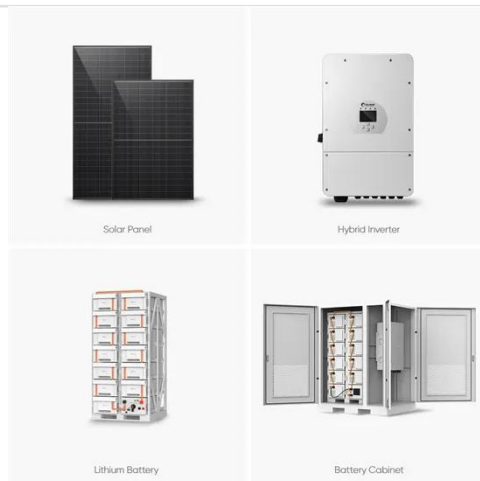


carbon-brushes-for-motors-and-generators-mersen-1605

Five brush grade families are used for brush manufacturing. Each of them corresponds to a specific requirement and has its own production process (see pages 9 to 17 of this guide).

carbon brushes types: Materials, Uses & Selection Guide

This guide explores their types of carbon brushes (including electrographite, metal-graphite, and resin-bonded variants), industry-specific applications, and selection criteria, backed by ...



5 different brush materials used for motor and generators applications

Our company can produce a wide range of high quality carbon brushes with conductive carbon materials including copper graphite, silver graphite, natural graphite, electro graphite, resin bonded carbon and ...

Carbon Brushes

A combination of the finest-grade raw materials and unique production processes allows our carbon brushes to offer outstanding performance, with excellent conductivity and uniform wear, even under ...



High-Performance Carbon Brushes for Generators:

Enhanced ...

Professional-grade carbon brushes engineered for optimal generator performance, featuring advanced materials technology, superior wear resistance, and exceptional electrical conductivity for reliable ...



Hydropower Station and Thermal Power Plant Carbon Brush , Multiple

With six material grades available, ranging from soft graphite to high-copper content brushes, they provide the perfect balance between conductivity, durability, and wear resistance to meet diverse ...



INTEGRATED DESIGN
EASY TO TRANSPORT AND INSTALL,
FLEXIBLE DEPLOYMENT



Generator Carbon Brush Guide: Selection, Maintenance Tips

A generator carbon brush serves as the critical electrical bridge in power generation systems. These specialized components, typically made from carbon graphite or metal-graphite ...

Carbon Brush for Generators , Schunk Carbon Technology

The right material selection is key to the efficiency and service life of generator carbon brushes. Depending on the application, materials such as metal graphite or electrographite are used.



Contact Us

For catalog requests, pricing, or partnerships, please visit:
<https://59empagm.pl>

