

Medium Voltage 30 solar Panel Size



Overview

A 3kW solar system is a popular choice for many homeowners looking to harness solar energy. Let's explore how to find the perfect fit with the solar panel size chart. Using detailed charts and terms like wattage, efficiency, and installation space makes it easy to find the right fit. It is. Next, you need to find out about the intensity of sunlight your area receives which is called the sun peak hours to enable you to determine the amount of electricity in kilowatt-hour that 1kWh of solar panel will be able to produce. With this in mind, you can now determine the total solar system. Power generation technologies include photovoltaic cells, panels and arrays, and radioisotope or other thermonuclear power generators. That is enough energy to run a 55-gallon water heater with average household use but it couldn't do. Encapsulated mini-panels utilize solar cells similar to those that power our satellites in space, yet they are safe and simple to use.

Medium Voltage 30 solar Panel Size



Solar Made 1-3.0-20 Solar Mini-Panel

Mini-panels allow for handling without the normal breakage and cell damage associated with fragile solar cells. Available in thirteen outputs with four case sizes to fit your every need. 6" red/black lead wires ...

PV Array Voltage and Size: What You Need to Know

Calculating PV voltage is very important when determining the size of your PV system. The reason this is so important is because voltage has an inverse relationship with ambient temperature.



What Can a Solar System Run: 3KW, 8kW, 20kW & More Sizes

A 5kW solar system is well-suited for powering the essentials in a medium-sized home, including the usual lighting, appliances (refrigerator, microwave, washing machine), and electronics.

Solar Panel Size Chart: Finding the Right Fit for Your Home and

These charts help you arrive at the correct solar panel size, solar cell size, and solar cable size. Choosing them appropriately helps your system deliver optimum output safely and securely.



200W Portable Solar Charger, Foldable Solar Panel with 23.5

About this item Product details Harness the energy of the sun with a portable solar panel charger offering 200W and 400W capacities for fast charging needs. Featuring monocrystalline technology, ...

Size your solar system

The system size depends on the number of solar panels and the rated capacity of the panels. System size is measured in kilowatts (kW). One kilowatt (1 kW) = 1000 Watts. For example, a typical home

...



Solar Panel Size Guide for residence and industry

Discover the right solar panel size that fits your home or industrial needs. Different solar panel sizes and

dimensions. [Learn more](#)

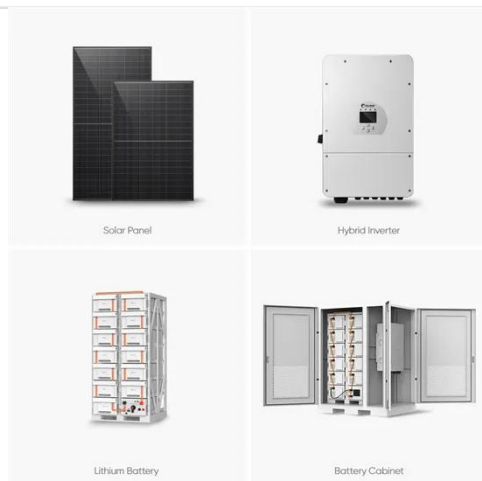


Medium Voltage Power Station

At a voltage of 1500 V DC it allows for significantly higher efficiency in system design. With a variety of options and the new DC-coupling readiness it provides maximum flexibility at minimum size.



51.2V 150AH, 7.68KWH



Electrical Schematic Architecture for Medium-to-Large Scale Solar PV

Key Highlights o DC Voltage Architecture Evolution: Medium-scale commercial systems (100-5,000 kWp) increasingly adopt 1000V DC configurations delivering 70-80% conductor costs versus 600V ...

Solar Panel Size Guide for residence and industry

Panel stiffness and moment of inertia usually need to be calculated for a specific spacecraft because they are dependent on multiple factors such as the size and mass of the panel, ...



Contact Us

For catalog requests, pricing, or partnerships, please visit:
<https://59empagm.pl>

