

# Parallel connection of solar container lithium battery packs of the same specification



## Parallel connection of solar container lithium battery packs of the s

114KWh ESS



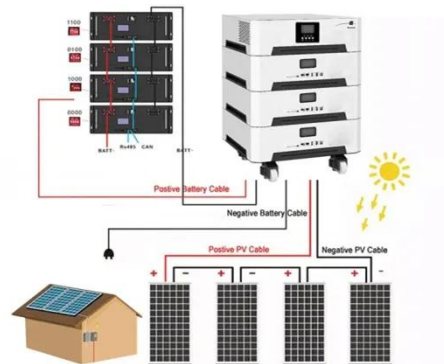
### Parallel Connection of Batteries in DIY Solar Power ...

A guide on safely connecting multiple batteries in parallel for DIY solar power systems, covering battery chemistry, cell count, and more

ISO 9001 ISO 14001 PICC RoHS CE MSDS UN38.3 UK CA IEC

### A Complete Guide to Parallel Connection of Lithium Ion Batteries

Connecting lithium batteries in parallel gives you more energy storage and higher current output. If you follow these steps, your system will be safe and work well.



### 10 series and two parallel solar container lithium battery pack

This article will analyze in detail the principles, methods and precautions of series and parallel connection of lithium batteries to help you avoid potential risks and build a battery system correctly.

## Lithium Series, Parallel and Series and Parallel Connections

Connecting multiple lithium batteries into a string of batteries allows us to build a battery bank with the potential to operate at an increased voltage, or with increased capacity and runtime, or both.



### How to Connect Lithium Solar Batteries in Series & Parallel

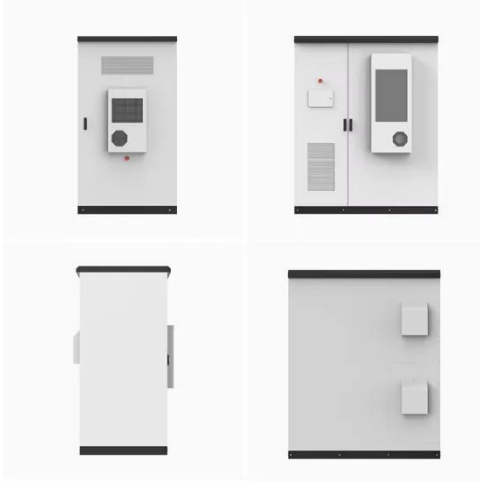
When setting up lithium solar batteries, understanding how to connect them in series or parallel is crucial for maximizing efficiency and performance. Below, we delve into the specifics of ...

### Solar container lithium battery packs directly connected in parallel

Connecting Lithium Solar Batteries in Parallel: When connecting batteries in parallel, the positive terminals are connected together, and the negative terminals are connected together.



### How to Connect Two Lithium Battery Packs in Parallel: A Step-by-Step



This guide explains the process, safety considerations, and real-world applications - perfect for solar installers, EV enthusiasts, and industrial energy managers.

## Lithium Series, Parallel and Series and Parallel Connections

Introduction

1. What is a BMS? Why do you need a BMS in your lithium battery? The lithium battery BMS, its design and primary purpose:
2. How to connect lithium batteries in series
4. How to charge lithium batteries in parallel

4.1 Resistance is the enemy

4.2 How to charge lithium batteries in parallel - from bad to best designs

Lithium battery banks using batteries with built-in Battery Management Systems (BMS) are created by connecting two or more batteries together to support a single application. Connecting multiple lithium batteries into a string of batteries allows us to build a battery bank with the potential to operate at an increased voltage, or with increased capacity. See more on assets.

discoverbattery bsl-battery



## Batteries in Series vs Parallel: Understand The Differences

In this article, we'll demystify these connection methods and help you understand when to use each one. Did you know that wiring two 24V batteries in series gives you 48V, while connecting them in parallel ...

---



## How to Connect Solar Batteries in Parallel for Maximum Energy

...

Unlock the full potential of your solar energy system by learning how to connect solar batteries in parallel. This comprehensive guide explores the benefits of increased capacity and ...

---

## Batteries in Series vs Parallel: Understand The Differences

In this article, we'll demystify these connection methods and help you understand when to use each one. Did you know that wiring two 24V batteries in series gives you 48V, while connecting them in parallel ...



## Lithium Solar Batteries Series vs Parallel Connection

To connect batteries in parallel: Identify Terminals: As before, know which terminal is positive (+) and which is negative (-). Connect All Positives

Together: Link all positive terminals of ...



---

## Contact Us

For catalog requests, pricing, or partnerships, please visit:  
<https://59empagm.pl>

