



## Overview

---

This review presents a comprehensive electrical model for a 5.8 kW solar photovoltaic (PV) grid-connected power system. The aim is to effectively track the maximum power points considering the fluctuations in solar irradiation and temperature. Measuring the power output of a commercial solar photovoltaic panel by measuring its output in volts and amps and then constructing a power curve gives us a clear understanding of the basic operating conditions that affect it. This power curve can then be compared to a known value of solar. This fact sheet illustrates the roles of distributed and centralized renewable energy technologies, particularly solar power, and how they will contribute to the future electricity system. Among others, the combination of DWPT and renewable energy is believed to indirectly reduce CO<sub>2</sub> emissions from running BEVs.

## Summary of Solar Grid-connected Power Generation Experiment

---



### EE362L Lab 2 Solar Power

The first part of the experiment was to determine the amount of power generated by a solar panel. I connected a variable load across the output terminals of a pair of Photowatt PW750-80 multi ...

### A Survey of the Researches on Grid-Connected Solar Power Generation

Photovoltaic power generating is one of the primary methods of utilizing solar energy resources, with large-scale photovoltaic grid-connected power generation being the most efficient ...

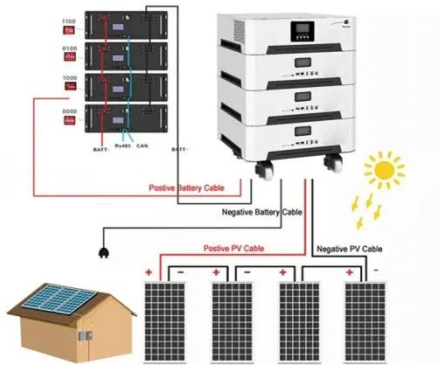


### Design and simulation experiment of photovoltaic power generation

This paper explores the design of a photovoltaic (PV) power generation system for solar-powered residences in Xuzhou, aiming to achieve zero energy consumption for homes throughout the year.

## A comprehensive review of grid-connected solar photovoltaic system

The state-of-the-art features of multi-functional grid-connected solar PV inverters for increased penetration of solar PV power are examined. The various control techniques of multi ...



## Solar Power and the Electric Grid, Energy Analysis (Fact Sheet)

Grid-connected, distributed generation sources such as rooftop PV and small wind turbines have substantial potential to provide electricity with little impact on land, air pollution, or CO2 emissions.

## 2000W single-phase solar photovoltaic grid connected inverter

In order to verify the rationality of the previous chapters and to better understand the working principle of grid connected solar inverters, a 2000W experimental prototype was developed.



Standard 20ft containers



Standard 40ft containers

## Simulink Based Modelling and Simulation of Solar Power ...



In today's generation, the need for electricity persists on an hourly basis. This review presents a comprehensive electrical model for a 5.8 kW solar photovoltaic (PV) grid-connected

---

## Simulating the Impact of PV Generation on Power System Voltage

Small scale PV generation (e.g. what you might install on the roof a house) thus takes place on the radial distribution grid while large scale PV generation (e.g. solar farms in the deserts of Arizona and

...



---

## Basic Experiment on the Integration of Grid-Connected

...

We will examine grid-connected DWPT for stable DWPT even when PV power generation is unstable. The usefulness and feasibility of the proposed system will be verified based on simulations using ...

---

## A Study on Grid Connected PV

## system

Real Time Digital Simulator (RTDS).  
Effect of variation of power factor of loads, variation of PV penetration, introduction of harmonics into the system by the PV inverter and anti-islanding effect of ...



---

## Contact Us

For catalog requests, pricing, or partnerships, please visit:  
<https://59empagm.pl>

