

The wind used in wind power generation is



Overview

Wind turbines use blades to collect the wind's kinetic energy. Wind flows over the blades creating lift (similar to the effect on airplane wings), which causes the blades to turn. The blades are connected to a drive shaft that turns an electric generator, which produces (generates). Wind turbines work on a simple principle: instead of using electricity to make wind—like a fan—wind turbines use wind to make electricity. The World Wind Energy Association (WWEA) semi-annual report shows that global new installed capacity reached 75GW in the first half of the year, a year-on-year increase of 64%, and is expected to exceed 150GW for the whole year, with a cumulative capacity exceeding 1320GW. Once built, these turbines create no climate-warming greenhouse gas emissions, making this a “carbon-free” energy source that can provide electricity. Wind power is a type of renewable energy that harnesses the kinetic power of wind for electricity generation.

The wind used in wind power generation is

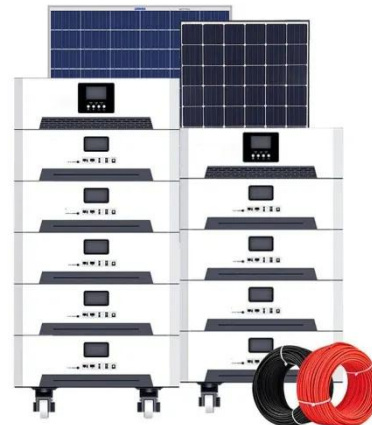


Electricity generation from wind

Wind turbines use blades to collect the wind's kinetic energy. Wind flows over the blades creating lift (similar to the effect on airplane wings), which causes the blades to turn.

Wind Energy Factsheet

Approximately 2% of solar energy striking Earth's surface is converted into kinetic energy in wind. Wind turbines convert this kinetic energy to electricity without emissions, and can be built onshore ...



How Do Wind Turbines Work?

Wind turbines work on a simple principle: instead of using electricity to make wind--like a fan--wind turbines use wind to make electricity. Wind turns the propeller-like blades of a turbine around a rotor, ...

What Is Wind Power? Complete

Guide to Generation, Types

Learn what wind power is, how wind turbines generate electricity, key system types, benefits, and real-world applications in modern renewable energy systems.



✓ TELECOM CABINET

✓ BRAND NEW ORIGINAL

✓ HIGH-EFFICIENCY



Wind power , Description, Renewable Energy, Uses, Disadvantages

Wind power is a form of energy conversion in which turbines convert the kinetic energy of wind into mechanical or electrical energy that can be used for power. Wind power is considered a ...

What is wind power?

Wind power is a type of renewable energy that harnesses the kinetic power of wind for electricity generation. As one of the largest sources of sustainable and clean energy, wind power is essential to ...



How Does Wind Energy Work: Complete Guide To Wind Power 2025

Wind energy harnesses the natural movement of air to generate electricity through sophisticated turbine technology.



Contact Us

For catalog requests, pricing, or partnerships, please visit:
<https://59empagm.pl>

