

Where to build wind power plants



Overview

WINDEXchange provides resource maps for land-based utility-scale, community-scale, offshore, and residential-scale wind development. Discover what are the best locations for installing wind turbines and how they can transform energy landscapes! Wind energy has emerged as a vital component of the global shift towards renewable energy sources. Understanding its significance and the right placement for wind turbines can greatly. There are many factors to consider when choosing a location for a wind turbine or wind farm, such as (but not limited to) the wind resource potential in the area, proximity to existing power lines, and potential environmental impacts. This process of selecting a location for a wind energy project. Deciding where to build new solar or wind installations is often left up to individual developers or utilities, with limited overall coordination. But a new study shows that regional-level planning using fine-grained weather data, information about energy use, and energy system modeling can make a. Optimize wind farm locations with our guide on location planning for wind turbines. Explore criteria, spatial analysis, and use CARTO for a free trial. So, if you're wondering what turbines are made of, how they're constructed or how the process might impact your land, you're in the right place. Not only will I run you through the step-by-step.

Where to build wind power plants



1.2 A Wind Project: Step by Step , One Power Company

As One Power builds new access roads, foundations, electrical systems, and of course, wind turbines, we are happy to show your team every step of the construction process.

A few guidelines for selecting wind energy sites

Although it may seem obvious, it is important to note that locations such as the bottom of a hill or inside a valley are not good sites for a wind turbine. The best locations in terms of wind ...

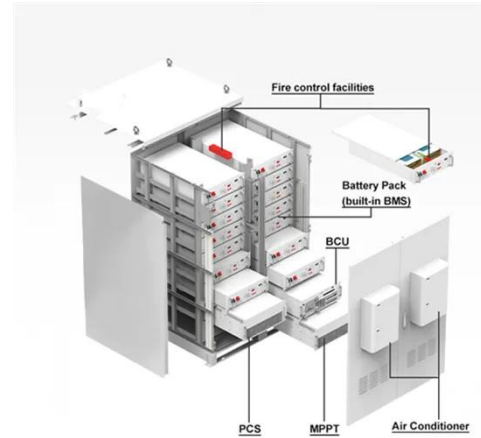


Wind power plant site selection: A systematic review

In this article, the wind resource is analyzed from the perspective of restrictive, economic, environmental, and social aspects that must be considered when selecting the areas for installing ...

How To Optimize Location Planning For Wind Turbines

Optimize wind farm locations with our guide on location planning for wind turbines. Explore criteria, spatial analysis, and use CARTO for a free trial.

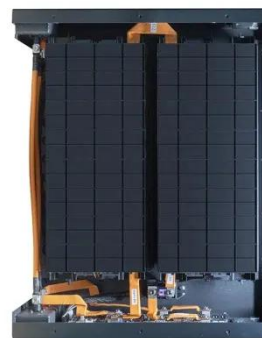


So you want to build a solar or wind farm? Here's how ...

Deciding where to build new solar or wind installations is often left up to individual developers or utilities, with limited overall coordination.

Wind explained Where wind power is harnessed

Favorable sites include the tops of smooth, rounded hills; open plains and water; and mountain gaps that funnel and intensify wind. Wind speeds are generally higher the greater the ...



What Are the Best Locations for Installing Wind Turbines?

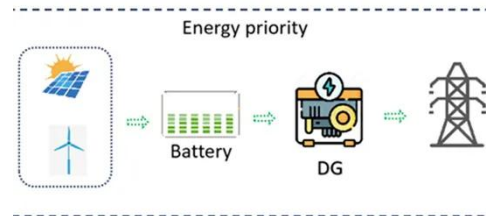
When evaluating suitable sites for wind turbine installation, several locations stand out due to their natural wind

patterns and geographical features. This section explores three of the most ...



Site Selection , Department of Energy

Wind energy maps and anemometer data help developers, homeowners, communities, states, and regions make informed decisions about where to develop wind projects. WINDEXchange provides ...



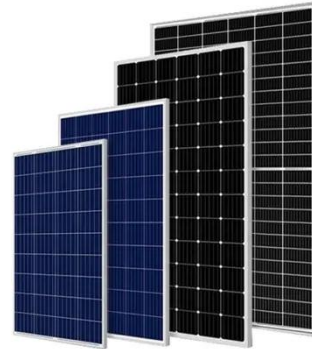
Installation of Wind Turbines: Setting Up a Wind Farm

If you're trying to figure out how the installation of wind turbines works, stick with us. We'll cover everything you need to know.

10 Steps to Developing a Wind Farm

10 Steps in Building a Wind Farm 1. Understand Your Wind Resource The

most important factor to consider in the construction of a wind energy facility is the site's wind resource. A site must have a ...



Contact Us

For catalog requests, pricing, or partnerships, please visit:
<https://59empagm.pl>

